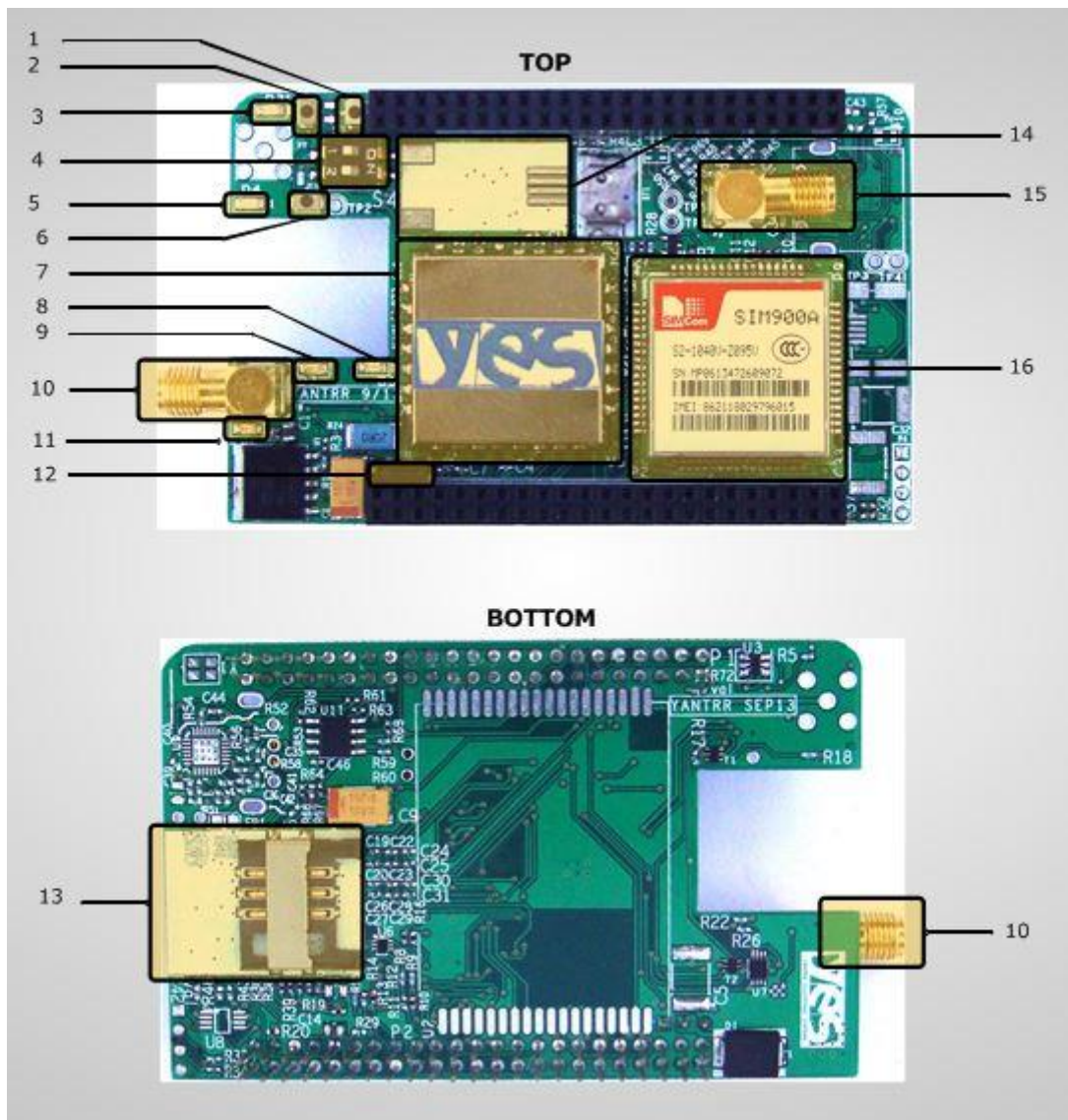


STARTUP GUIDE



1. Hardware Overview of Vayu 2GP-A/2G-ACape :

1. GPS Module Reset Switch
2. GSM/GPRS Modem Hard Reset Switch
3. STATUS LED for GSM/GPRS Modem
4. DIP Switch for Cape
5. NETLIGHT Led of GSM/GPRS Modem
6. ON/OFF Switch for GSM/GPRS Modem
7. GPS Module
8. 1 PPS Fix LED for GPS Module
9. 3.3 V Power LED/GPS Modem Power LED
10. SMA Connector for GPS Antenna
11. Power LED for Cape/ GSM/GPRS Modem
12. 5V Power Jumper for Cape
13. SIM Card Connector
14. RJ9 Connector (4P4C), Unpopulated
15. SMA Connector for GSM/GPRS Modem Antenna
16. GSM/GPRS Modem Module



BB Black
Compatible

www.yantrr.com



Note: Please carefully stack/remove cape from Beaglebone Black to avoid bending of pins and any injury while handling.

2. Steps to follow after unpacking Cape :

1. Insert a GSM/GPRS enabled SIM Card in SIM Card slot of cape (*see figure :13*)
2. Now mount this cape on Beaglebone black
3. Connect a Quad-band GSM antenna at SMA connector for GSM/GPRS Modem (*see figure :15*)
4. If a GPS module is present, connect a GPS Antenna at SMA connector for GPS Antenna (*see figure: 10*).
5. Place a microSD card updated with drivers and files required by the cape in microSD card slot of Beaglebone Black. All the files and support is available here :
<http://www.yantrr.com/products/m2m-cape-for-beaglebone/support/>
6. Set the Cape address from the DIP switch (*see figure: 4*). By default, DIP switch is set for address 0x54. Other addresses available are 0x55,0x56 and 0x57, which should be set as per stacking order of the cape in case of more than one cape is stacked simultaneously.
7. Ensuring that Power Jumper(*see figure :12*) is in place, boot up Beaglebone Black

3. For documentation and software updates, please visit:

This cape fully supports Debian Wheezy and Angstrom distributions.

For Angstrom support available publicly, please go to:

<http://www.elinux.org/Beagleboard:BeagleBoneBlack#Angstrom>

For Debian Wheezy support available publicly, please go to:

<http://elinux.org/BeagleBoardDebian>

The software needs some additional setup for using the Cape.

Yantrr support including downloadable images of Debian Wheezy and Angstrom, Application notes, Hardware and Software guides and FAQs are available here:

<http://www.yantrr.com/products/m2m-cape-for-beaglebone/support/>



BB Black
Compatible

www.yantrr.com

