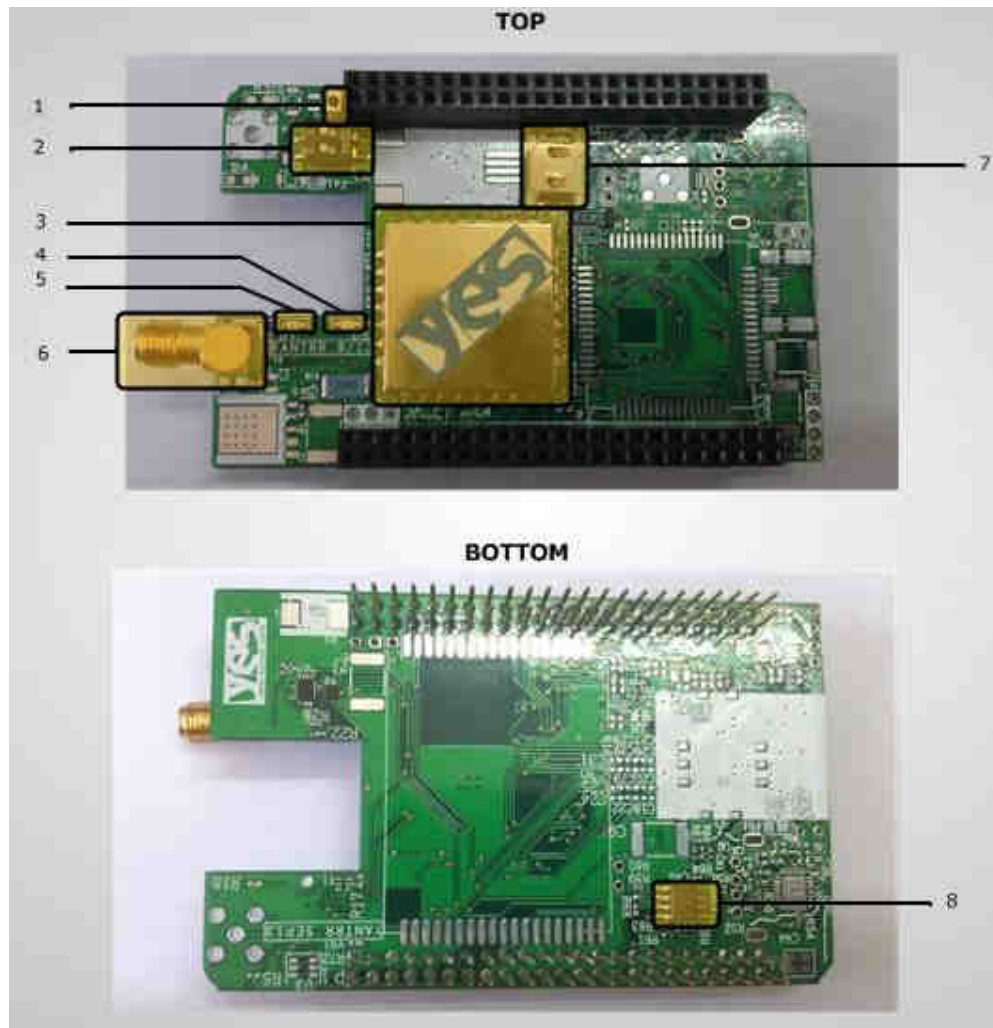


# STARTUP GUIDE



## 1. Hardware Overview of Vayu P-A Cape :

1. GPS Module Reset Switch
2. DIP Switch for Cape
3. GPS Module
4. 1 PPS Fix LED for GPS Module
5. 3.3 V Power LED/GPS Modem Power LED
6. SMA Connector for GPS Antenna
7. Optional Standby Battery for GPS Module
8. EEPROM memory

**Note:** Please carefully stack/remove cape from Beaglebone Black to avoid bending of pins and any injury while handling.



**BB Black**  
Compatible

[www.vytr.com](http://www.vytr.com)



## 2. Steps to follow after unpacking Cape :

1. Mount this cape on Beaglebone black
2. Connect a GPS Antenna at SMA connector for GPS Antenna (*see figure: 6*).
3. Place a microSD card updated with drivers and files required by the cape in microSD card slot of Beaglebone Black. All the files and support is available here :  
<http://www.yantrr.com/products/m2m-cape-for-beaglebone/support/>
4. Set the Cape address from the DIP switch (*see figure: 4*). By default, DIP switch is set for address 0x54. Other addresses available are 0x55,0x56 and 0x57, which should be set as per stacking order of the cape in case of more than one cape is stacked simultaneously.
5. Carefully slip in the optional GPS backup battery into the battery holder. The holder spring may be slightly tight. Note that the battery helps reduce the time to first fix when turning off and re-powering the GPS module. The GPS will work fine without the battery but may take longer to get its first fix.
6. Boot up Beaglebone Black

## 3. For documentation and software updates, please visit:

This cape fully supports Debian Wheezy and Angstrom distributions.

For Angstrom support available publicly, please go to:

<http://www.elinux.org/Beagleboard:BeagleBoneBlack#Angstrom>

For Debian Wheezy support available publicly, please go to:

<http://elinux.org/BeagleBoardDebian>

The software needs some additional setup for using the Cape.

Yantrr support including downloadable images of Debian Wheezy and Angstrom, Application notes, Hardware and Software guides and FAQs are available here:

<http://www.yantrr.com/products/m2m-cape-for-beaglebone/support/>

